

**ITEM 26. PARKING – DISABILITY PARKING – HARCOURT PARADE  
ROSEBERY**

**TRIM RECORD NO: 2016/345551**

**RECOMMENDATION**

It is recommended that the Committee endorse the following:

- (A) Allocation of parking on the northern side of Harcourt Parade, Rosebery west of Dalmeny Avenue, between the points 1.5 metres and 17.1 metres (two car spaces) as “Disability Parking Only 8am-6pm Mon-Fri 8am-10pm Sat”; and
- (B) Installation of E1 edge line along the northern kerb of Harcourt Parade, Rosebery, between Dalmeny Avenue and a point 70 metres west of Dalmeny Avenue.

**VOTING MEMBERS FOR THIS ITEM**

<b><i>Voting Members</i></b>	<b><i>Support</i></b>	<b><i>Object</i></b>
City of Sydney		
Roads and Maritime Services		
NSW Police – Redfern LAC		
Representative for the Member for Heffron		

**DECISION**

**BACKGROUND**

Creativity Inc, an organisation that operates the Day Program Centre for people with disabilities, has requested two dedicated disability parking spaces in Harcourt Parade, Rosebery, between the hours of 8am and 6pm, Monday to Friday and 8am to 10pm on Saturdays.

The disability parking spaces will allow the organisation’s shuttle buses to park and drop off/pick up mobility impaired patrons to/from the Day Program Centre.

Creative Inc has advised the City that its patrons are not wheelchair-bound but are not able to physically walk far.

**COMMENTS**

Harcourt Parade, Rosebery, between Primrose and Dalmeny Avenues is designated for two-way traffic flow with an approximate width of 12.8 metres (kerb-to-kerb). The road and footway grades are relatively flat adjacent to this proposed space.

The kerb space on the northern side of Harcourt Parade is currently unrestricted.

Under existing conditions, vehicles park on both sides of Harcourt Parade which reduces the trafficable lane for two-way traffic flow to an approximate width of 8.6 metres. The remaining width is allocated for on-street parking.

Footpaths (approximately two metres wide) are provided on the northern side of Harcourt Parade, adjacent to the proposed dedicated disability parking spaces.

The Australian Standard for on-street disability parking (AS 2890.6-2009) requires the provision of a 3.2 metre wide by 7.8 metre long bay.

Two 7.8 metre long disability parking bays are proposed and with consideration for the width of existing parking lane in Harcourt Parade, a 3.2 metre wide bay can be accommodated within the carriageway.

To ensure safe access to and from the disability parking spaces, an E1 edge line will be installed between the intersection of Dalmeny Avenue and a point 70 metres west. The painted edge line will be installed 3.4 metres off the northern kerb thereby providing the proposed disability spaces with a width that exceeds the Australian Standard.

This will provide adequate space for people with a disability to enter and leave the vehicles without impeding passing traffic or placing themselves at risk.

The two disability parking spaces will be signposted as “Disability Parking Only 8am-6pm Mon-Fri 8am-10pm Sat” and revert to unrestricted parking at other times.

The City has undertaken a risk assessment for the proposed installation of the dedicated disability parking space. The assessment has been sent to the RMS for consideration.

## **CONSULTATION**

The City consulted local residents and businesses in the area. There were 16 letters sent out with no responses supporting or opposing the proposal.

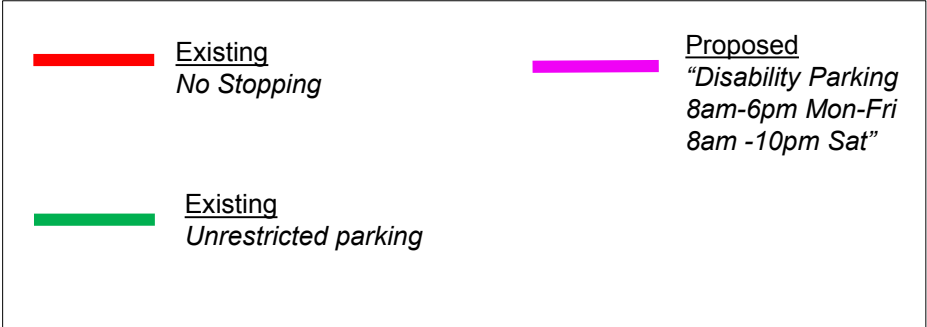
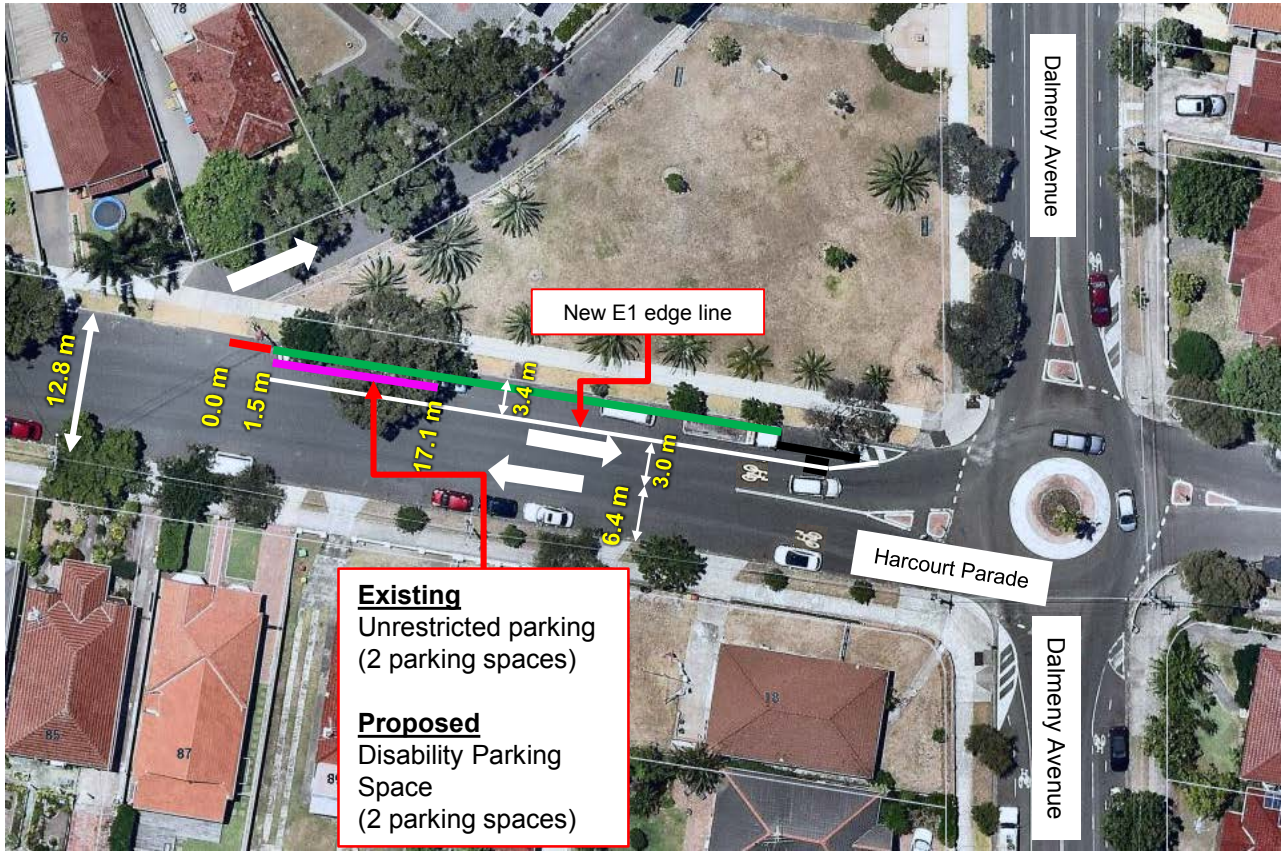
## **FINANCIAL**

Funds are available in the current budget.

## **ATTACHMENTS**

Parking – Disability Parking – Harcourt Parade Rosebery

Ganesh Vengadasalam, Engineering Traffic Officer



Source: nearmap (June 2016)

PROPOSAL

HARCOURT PARADE ROSEBERY  
PROPOSED DISABILITY PARKING

